



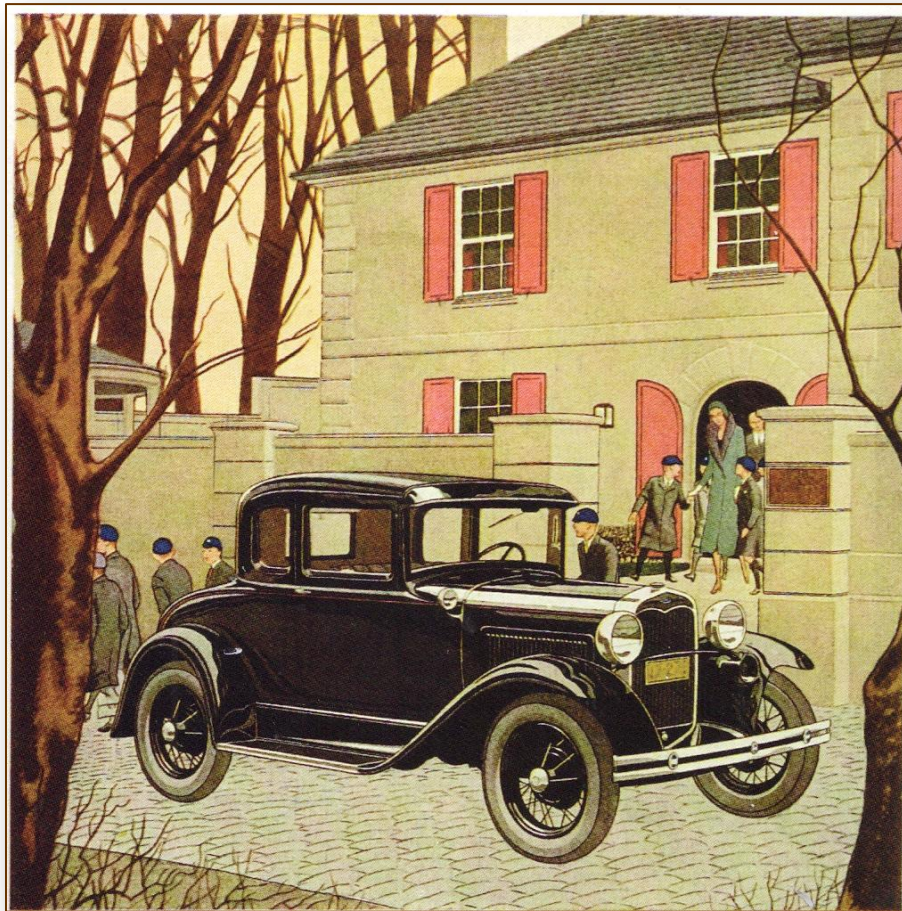
THE
SOUTHSIDE
A'S
MODEL A RESTORERS CLUB
CHARTERED MARCH 1989

Newsletter

PUBLISHED BY THE SOUTHSIDE A'S – MARC REGION

August, 2013

Volume 6, No. 8



“Another school years arrives.”

Southside A's
2013 Board of Directors

Officers:

Co-Directors: Jim Johnston 678-423-4344

john8191@bellsouth.net

Tom Miller 770-502-8131

tc_bmiller@yahoo.com

Vice-Director: Larry Peterson 770-964-6644

larrypete100@gmail.com

Rec. Secretary: Jim Wingo 770-486-8858

nosomi2@gmail.com

Treasurer: Betty Miller 770-502-8131

Corr. Secretary: Mike & Gwyneth Shotwell

770-463-2630

Past Dir./Advisor: Phil Meyers

pkmeyers1@earthlink.net

Committee Chairpersons:

Activities: Dick Carne & Tom Romine

Newsletter: Gwyneth Shotwell
 (Mike Shotwell, unpaid consultant)

Mileage keeper: Eugene Willingham

Membership: Jackie Johnston

Historian/Scrapbook: Ann Hunter

Tech Activities: Bentley Bohanan

Phone Tree: Merle Bennett

Fashion: Kathie Meyers

Website Team:

Webmaster: Pat Tyler

Art Direction: Mike Shotwell

2013 Southside A's Club Events

****BOARD MEETING: August 7th, 7:00 PM,**
 at the original Sprayberrys on Hwy 29 in Newnan.
 All are invited! Come at 6:00 for a bite of dinner.

August 17	Moonlight tour to LaGrange
September 28	TBA-Tour for Int'l Model A Day
October 5	Joint car show with Georgia Region MAFCA, at Capitol City Club in Atlanta.
October 17-19	Sweet Home Alabama, CAMAFCA tour in the Mobile, AL area
November TBD	Annual Meeting
December 28	Holiday Party at the Tyler's in LaGrange

2013 Events of Interest

August 10	Model A Ford Parts Swap Meet - at Cofer's, Tucker, GA
Sept. 27-28	Palmetto A's Annual All Model A & Model T Swap Meet, Columbia, SC
October 8-12	Hershey Swap Meet/Car Show
November 23	Moultrie Swap Meet

Editor's Notes:

Well, another month has come and gone, and kids are getting ready to go back to school! How the time does fly...

It was a quiet-ish July for the club, but the Car Games Tour was loads of fun, and a great way to be in our cars under shady, cool trees. See the story inside.

I want to give a belated thank you to Teri Besch and Betty Miller for contributing many of the great photos from the MARC Meet story in last month's newsletter.

I also want to encourage any members with interesting Model A-related experiences to share, to send them along for publication in the newsletter!

Gwyneth Shotwell

Happy Birthday!

1st Rick Horne
8th Beverly Fogg
9th Pat Tyler
11th Tina Carne
11th Jack Miller
12th Pam Tyler
13th Dick Carne
15th Jim Hunter
29th Johnnie Hobbs
31st Richard Sewell



Happy Anniversary!

10th - Mike & Carole Foran
27th - Ken & Patsy Riley



Notes from Our Director

It sure has been good to have a few days at the end of July without any rain. And, no, there is no truth to the rumor that Tom Miller has been using his expert woodworking skills to build an ark! Those of you that were unable to participate in our Car Games last month missed a really fun time. We had a great turnout, and thanks to Tom & Betty Miller for organizing this event – see the details elsewhere in this issue. These one day events are always very popular and attract a lot of the membership. If you have any ideas on a one day event please let one of the Board members know, and we will try to work it into the schedule.

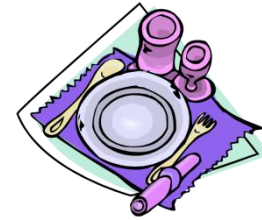
Our event this month is what is becoming our Annual Moonlight Tour. This year Jim Wingo will be leading us to LaGrange, GA and dinner at the Brickhouse Restaurant. These tours have always been a lot of fun, and although it can be a little on the warm side at the beginning, the evening drive home, with temperatures lower, is very pleasant. Get that Model 'A' out and join us on the 17th.

On a recent trip to Tallahassee, FL Jackie and I visited the Tallahassee Automobile Museum. Put this on your list of things to see if you ever get down that way. They have over 130 classic and antique cars along with motorcycles, pedal cars, and some beautiful antique boats and outboard motors.

Lastly a little Tech Tidbit. A few of our members use the electronic distributor made by First Street Ignitions (FSI). I know I have heard other members express some concern that using one of these units may leave you stranded if the ignition module fails, and it may be a good idea to carry a spare module. I recently learned that FSI has been building modified distributors with two modules inside the distributor and have an A/B switch mounted in the vehicle. This system is very popular with "Great Race" participants that cannot afford any loss of time to affect their score. The system uses only one coil and one distributor, and allows the driver to switch modules on the fly. (First Street claims they have not yet heard of anyone having to switch modules because of failure) This may be the way to go if you are considering installing an electronic ignition in your 'A'.

Hope to see you 'on the road.'

Jim Johnston



MOONLIGHT DINNER TOUR!

Please mark your calendar for the Moonlight Tour **August 17th**.

We will meet at Sam's parking lot in Peachtree City starting at **4:30PM**, please make sure you have a full tank of gas and are ready to pullout of the lot sharply at **5:00PM**.

We will be traveling to LaGrange, Ga., it is about a one hour drive to the LaFayette Square on Main St. We will be taking pictures in the square and then walk a short distance to **The Brickhouse Restaurant**. They have excellent food and a complete selection of adult beverages for the non-drivers.

Our route: We will proceed south on Hwy 54 to Hogansville and make a left onto HWY 29/14 South into LaGrange.

I will have maps available for those attending but it is an easy drive and the roads are good.

I need to have your **RSVP and total in your party by August 10th** in order to have the tables arranged and restaurant staff planning. etc.

This should be a nice evening tour and even if the weather is hot, it should not be too bad as we make our way down to "Pat and Pam Tyler territory". Please feel free to drive your modern car if your A is just not up to it on the 17th.

Here's the address for your Model A's GPS:

Brickhouse
141 Main Street
LaGrange, Ga.

Pat Tyler will attempt to arrange parking on Main St. for our cars. However, there is covered parking directly behind the restaurant.

Any questions please call - 404-683-7344

--Jim Wingo

NEWSLETTER NOTICE:

Due to the rising cost of printing and mailing the newsletter, the Board has made the difficult decision that, beginning in January, 2014, there will be an additional charge for those wishing to have a printed copy. We will monitor the cost for the rest of the year to determine what the fee will be.

Highlights from the May Board Meeting

The Southside Model A's Board Meeting was held on July 10, 2013 at the Sprayberry Restaurant in Newnan.

The meeting was called to order at 6:55 PM by Co-Director Tom Miller. The following members were present: Jim and Jackie Johnston, Tom and Betty Miller, Jackie and Larry Peterson, Jim Wingo, Dick Carne, Pat and Pam Tyler, Tom Romine, Dick Carne, Jim Hunter.

- A motion and approval made to accept the May 1, 2013 meeting minutes, which passed. No June minutes were made as the meeting for June was cancelled.
- The Treasurer's report was made by Betty Miller, current account balance is \$1,382.35 as of June 30, 2013. Motion to accept the report was made and accepted by the board.

Committee Chair Reports

Corresponding Secretary's - G. Shotwell not present, but a report on the Dick and Jane tour will be submitted to the National organization. G. Shotwell in an earlier correspondence with T. Miller suggested that we discuss whether the report on the Dick and Jane Tour should be more extensive than usual or just to report on it as a "normal" tour. She suggests that we should discuss this at the next board meeting and make a decision.

- **Membership** - by Jackie Johnston - Members total 53 families and one pending application
- **Newsletter** - Mike Shotwell - No report, a set of hardcopies will be sent to 4 members and one to National organization.
- **Webmaster** - Pat Tyler - No report, everything with the website is running well.
- **Historian/Scrapbook** - Jim Hunter for Ann Hunter - Photos are encouraged for each and every event for inclusion into the club scrapbook.

• **Activities -**

- August 10th M.A.F.C.A. swap meet in Liburn, Ga. on Lawrenceville Hwy.
- August Moonlight Tour needs a leader to plan this event, Tom Miller will solicit for this.
- September 28th on International Model A day we will have a meet at Barbara Kitchens home. We will spread the word for this event to other clubs to contact Barbara directly. Patches for the IMA will be coordinated between Jim J. and Tom R.
- October 5th - show with Georgia Region MAFCA at the Capital City Club
- November 2nd or 16th - Business Meeting will be tentatively planned for the Green Manor in Union City.
- November 2014 - Possible trip to Washington Ga. or possibly Milledgeville, Eatonton, and Sparta was proposed by Dick Carne.
- Dick threw out possible thoughts for an event for the Fall of next year (2014), perhaps as a follow-up to the "*First ... (not necessarily annual) Fun with Dick and Jane Tour*". Liz Horn and Dick have had some very (very) preliminary discussions about a possible follow-up event along the lines of an antebellum home tour. These towns are rich with homes and buildings of that era. Perhaps in September, since the Social Security Run is always in May, and the Sweet Home Alabama Tour is always in October.
- December Party at Pat and Pam's home is planned for December 28th

CONTINUED....

New Business

- The board voted and passed the following motion, “Car events that come up through the year should be sent out but a note should accompany the e-mail that it is not a sponsored or endorsed event by the club.”
- Old Business
- Larry Peterson is writing a draft of for new by-laws that will streamline board structure and include a provision for MARC & MAFTA affiliation. This draft has been reviewed by Tom Miller and will be submitted to the rest of the board pending some smaller changes. The board will review this draft prior to the next board meeting. The proposed document will be presented to the general membership at the annual business meeting in November.

The meeting was adjourned at 7:43PM. The next meeting will be held on August 7th at the Sprayberry Restaurant in Newnan, the board meeting starts at 7 pm and dinner at 6 pm.

Respectfully submitted,
Jim Johnston for Jim Wingo
Recording Secretary

Treasurer’s Report

Balance as of May 31, 2013	\$1,382.35
Deposits	\$60.00
Expenses	\$0.00
Balance as of June 30, 2013	\$1,382.35

“Saturday Morning Car Games”

By Tom Miller

OK, so it wasn’t like Olympic athletes, but we did have some fierce competitors. Like any Model A outing, we had to eat. We started the day at Shoney’s in Newnan. They were able to seat us and they did a pretty good job at the buffet, but for those of us who ordered from the menu: yikes, they were slow! We did a tour of some of the Newnan/Coweta highlights. The hospitals are getting national attention so we toured by both, opened in 2012. The Cancer Center has just announced its third expansion and the second expansion is not even complete. We are proud of our home city! We toured through town and were able to see the Platinum Point and Greenville/LaGrange Historic Districts, then on to Carl Miller Park. Luckily it wasn’t sunny (wow, that would be a change wouldn’t it?), but we did have large trees for shade anyway. It’s a pretty park.

We had three games. The first game was “closest to the pin”, the object of the game was to pull forward and stop closest to a traffic cone without hitting it. This was won by Johnnie Hobbs with an astounding $\frac{3}{4}$ inch gap between his bumper and the cone! The next closest was nearly $2 \frac{3}{4}$ inches. Congratulations, Johnnie! The second game was the “newsboy toss”, the object of the game was to toss newspapers, first from the car to rings placed 5 feet from the car by both the driver and passenger. The next stage, more difficult was for the passenger to toss over the roof to the drivers ring and the driver to toss over the car to the passengers ring. This game was won by the Johnstons with a bull’s eye in 3 out of 4.



The Simpsons were pretty close, but couldn’t out-do Johnnie Hobbs, with help from teammate, Sean.



Johnstons attempting "Closest to the Pin." Note hoola hoop nearby, used for the "Newsboy Toss."

I must also mention that in this game, the passengers (mostly female), did much better than drivers. Perhaps I should say congratulations Jackie? The third game was "waiter, water", the object of this game was to start from one end of the parking lot, go to the other end of the parking lot, execute a three point turn and return to the starting point. Oh, I nearly forgot to mention – this route was taken with the passenger balancing a waiter's tray with a full glass of water out the window, also timed! The winners here were the Tylers with a time of 43 seconds. Honorable mention goes to Sean

Hobbs as the driver and Johnnie as the passenger. When Sean popped the clutch every drop of water disappeared!

So, we proved we can have fun on a hot summer day. We had 16 families from our club attending. The distance award goes to our only guest: Cecil Freeman and his two grandsons drove over from Alabama just for the fun of it. Special thanks to Teri Besch who help with the competition. Also thanks to the Johnstons for carting the cooler, pop-up, cones, etc, in their spiffy panel delivery. We were done and on our way home by noon. If you were one of the many who attended, thanks for coming. If you didn't, please try to make the next one. These summer tours are usually shorter and planned to accommodate the weather. Hope to see you soon!



Jackie demonstrates the proper technique for "Waiter, Water." Congratulations to the Tylers!

FOLLOW-UP TO REPORT ON THE MARC MEET:



Here are a couple of photos showing the largest gathering of 1931 A-400's since they came out!





Transmissions that “Jump Out of Gear”

By Dick Carne

Over the years I’ve heard folks remark on occasion about their cars “jumping out of gear”, and accordingly voiced their concern as to what might be some of the more common causes. Although there can be multiple contributing factors, by far most of these can be traced back to some component within the “shift tower”. The shift tower refers to the top casting on the transmission, which includes the shift lever, and from the mid-1928 cars until the end of production, the emergency brake lever. Although there were three different shift tower castings made, they all share the same basic design and for the most part, the same set of shifting components [the early (AR) cars had no attachment for the emergency brake handle; from mid - 1928 through early 1929, the brake lever was in front of the gear shift lever; from mid - 1929 until the end of production, the emergency brake lever was mounted on the right side of the shift tower].

Shift tower “fixes” are fairly inexpensive and can often be accomplished in a relatively short period of time. The usual culprits are either a weak spring on the transmission plungers [part no. A7233 (detent caps or “bullets”) and A7234 (spring)], or excessively worn shifting forks. The transmission plungers and spring put pressure on the shifting fork shafts (rails) (A-7240 and A-7241) and prevent accidental movement of these two shafts. On rare occasions, the two shift rails may also have excessive “wear trails” that prevent the plungers from soundly “locking” the transmission in place.

The quickest and easiest “fix” for most “sloppy” transmissions is a replacement of the transmission plungers and spring. Once the tower is removed from the transmission, look for a dome-headed screw on the front of the transmission tower - the plunger spring is removed from this location. It will also be necessary to remove the two shift rails in order to effect a replacement of these components. In that event, the two shifting fork pins (A-7232) that secure the shifting forks to the shifting fork rails should also be replaced (this would also be a good time to reverse the two shifting forks). A word of caution here though - DO NOT INTERCHANGE THE TWO SHIFT RAILS! While the tower is off, also make certain that the vent hole on the top “tower” portion of the casting is open - this will prevent pressure from building up within the transmission case itself and sending gear lubricant out the back of the transmission.

The second most common cause of “jumping gears” is worn shifting forks. Over the years, continual shifting causes these to wear and lose their 90 degree, box shape. Unfortunately, no one is currently reproducing shift forks, but if these are not worn too badly, a simple fix would be to disassemble the shift tower and swap the shifting forks (A-7209A) as between the two parallel shifting fork shafts. The two forks are interchangeable. If excessive wear can be visually noticed such that the cutout portion of the shifting fork is no longer “box shaped”, then it may be necessary to have the fork(s) welded up and filed down to achieve the original “box shape”. In that event, the “box” should be only slightly larger than the .490 inch ball on the end of the shift lever. A small amount of wear on the shift forks should not cause a transmission to slip out of gear.

CONTINUED, next page...

Within the transmission case itself, there are other potential culprits as well, but these are far less often the cause for unruly gear problems. However, with that said, the fact that the Model A used straight-cut gears as opposed to gears cut on an angle (helical gears) allows the gears themselves to be more susceptible to drift or walk (the use of straight cut gears is what also gives the Model A its distinctive "whine" when accelerating through the two lower gears). Similarly, wear on the end of the input shaft could also be a contributing factor, as well as excessive wear on the teeth of the cluster gear and the two sliding gears. However, before considering new gears and an effective replacement of all worn gears, bearings and shafts, in the majority of instances, a hard look at the shift tower will usually correct most problems.



Right: Here is an example of an extremely worn shifting fork. Ideally, the two opposing sides should be parallel, and "back" side flat and perpendicular to the other two sides.

Below are photos of the two shift rails - note the rounded "indentions" that "lock" the gear in place. The "wear trails" are evident in the "V" shaped notches on either side of these indentions. These would not be present with new shafts.

The combination of a "tired" plunger spring and detent caps, worn shifter forks, and then shift rails (usually in that order) are the most common culprits found in transmissions that will occasionally "jump out of gear".



*Grateful appreciation is accorded to Tom Endy who has graciously agreed to allow reprints of his technical articles. The pictures above are copies taken from one of these articles.

Era Fashions: Guest contributor, Gwyneth Shotwell

Our Fashion Editor, Kathie Meyers, has laid some wonderful groundwork in giving us multiple ideas for dressing in the “Era Image,” and I thought it might be instructive to share what a few of our members (myself included) have put together in this realm.

As we showed you last month in the story about the MARC Meet, the Millers and Shotwells got decked out in their era-image finest for the evening of the Fashion Show, Ice Cream Social and exhibition of fine-point and A-400 cars. The makeup of their outfits, and how they were put together, shows several of Kathie’s suggestions.

First up will be the Millers, Betty and Tom:



Betty’s lovely flowered dress has a perfect era feel, accented by the split sleeves and lightweight flowing fabric in a flower print. She found this fetching frock at Ross Dress for Less, no less! This shows that simply having an understanding of the various period styles with some of the recognizable features, allows you to spot similar aspects in many of today’s dresses.

The accessories Betty put together include her straw hat found in an antique mall, dainty earrings suitable to the period, and shoes purchased at T.J. Maxx. Her aluminum mesh 1930’s handbag was actually discovered at an antique car swap meet, on a table featuring car parts. Turns out the wife of the vendor had a few items she wanted to sell, and placed them on display. You never know where you might find the perfect accent!

Tom is decked out in a wonderful seersucker suit in pale blue and white, sometimes called an “Ice Cream Suit.” This was purchased at Jos. A Bank; again, current day



clothing can harken back to the era, given the proper accessories. To that end, Tom added a vintage straw hat found at a flea market. He wore a pale pink Oxford shirt, and finished off his look with golf saddle shoes with the spikes removed (it only requires unscrewing them).

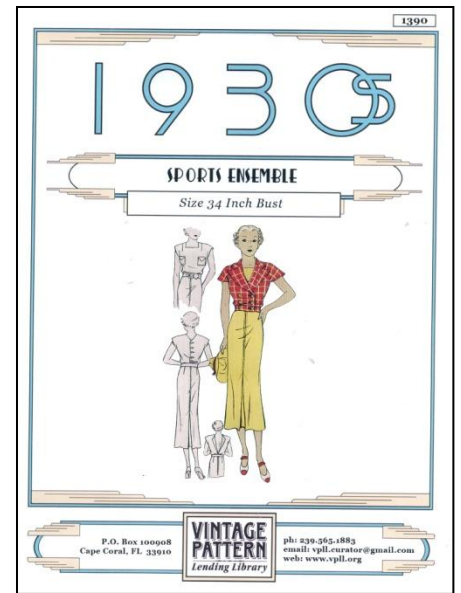
The Shotwells:

As you’ll see on the next page, Mike is attired in an outfit combining era image with the modern day: His knickers (plus-fours) and argyle socks are from GolfKickers.com. The knickers are a polyester fabric, with elastic around the bottom of the pant legs. His golf cap is something that is readily found in a variety of stores, including department stores, hat stores and golf shops. His shoes, like Tom’s, are golf shoes with spikes removed. The modern touch is his black polo shirt (which he wore to designate himself as the president of the A-400 club), which actually blends pretty well for the purpose of “era image.”



Gwyneth made her dress from a 1930's vintage pattern purchased online at a Kathie Meyers-recommended website, vpll.org. (See below) It closely resembles the McCall's May, 1930 illustration of a tennis dress, seen below. Accessories include a straw cloche hat from a vintage store in Atlanta, closed sandals and small vintage-looking earrings from Dillard's (not expensive!), and white cotton gloves purchased that day at the fashion swap meet for \$2.00.

So, you can see that there are many ways to put together fun clothes that are even more fun to wear, either when touring, or attending a Model A function. We strongly encourage you to give it a try, and feel free to contact any of us for pointers, questions, or just support in taking those first steps!



“Did you hear about the cross eyed teacher who lost her job because she couldn’t control her pupils?”

**Southside A’s
currently has 53 active families
on our roster!**

NEXT EVENT AT THE MUSEUM! September 20-22, 2013

We are moving to the next phase of the museum where we will be holding an annual meet at The Gilmore complex. This year we will have some seminars and a banquet on Saturday night. Attached is the registration form for the meet. It is also available at the MAFFI.org website to download for your member's convenience.

The MAFFI board is looking forward to seeing many of you in September. This is such a great location and time of year to come out with your Model A.



Model A's at The Model A Museum The Gilmore Car Complex in Hickory Corners, MI September 20-22, 2013

Name: _____

Passenger: _____

Address: _____

City: _____ State: _____ Zip: _____

Phone: _____

Email: _____

MAFFI Member Yes No Non members will have to pay a \$12/per person admission
at the Gilmore.

Registration, includes seminars, a raffle ticket, and a dash plaque \$25

Banquet Saturday Night \$20 per person number _____ \$ _____

Dinner selections include salad, non-alcoholic beverage
and a choice please indicate choice with number

Sirloin Steak, _____

Pan Fried Tilapia, _____

Smothered Chicken Breast _____

Bringing Model A Yes No

Total included: \$ _____



Four Points By Sheraton in Kalamazoo, MI is the host hotel. It is convenient to the Model A museum and the banquet location. The rate is \$89 per night plus tax. Please make your reservation by August 23 to get the rate. 269-385-3922, the event is Model A the number is 1665. They are located at 3600 East Cork Street Court, Kalamazoo, MI

Event Schedule

Registration at the Four Points in Ramona Room September 20th 1-5PM

Dinner on your own

Tour to museum September 21 9:30 AM Seminars start at 10:30 and again at 1:30

lunch is on your own.

We will meet at the Blackhawk Bar & Grill at 5PM for social hour, dinner will start at 6PM

The museum, as well as The Gilmore Complex, is open on September 22 but there are no events scheduled by MAFFI.

Make checks payable to MAFFI and return to:

MAFFI

Model A Day at The Gilmore

P.O. Box 95151

Nonantum, MA 02495

The signers below, agree to indemnify and hold harmless for any and all liability due to my attendance and participation in the Model A Day September 20-22, 2013 at The Gilmore Car Complex, the Model A Ford Foundation Inc., their officers, directors, staff and any and all constituents acting on behalf of the aforementioned affiliations. Submission of this signed registration form constitutes acceptance of the terms of this release. The vehicle being used has all required automobile insurance established by state statute.

Signed: _____

Date: _____



7th Annual Sweet Home Alabama Tour Oct 17-19, 2013

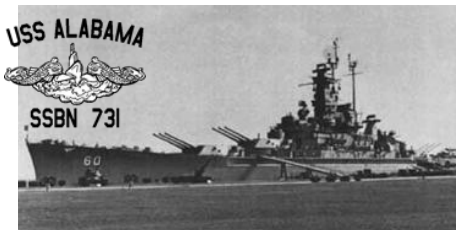
The Central Alabama Model "A" Club's Seventh Annual Sweet Home Alabama Tour will highlight the beauty of Alabama's Gulf Coast. The Tour will be conducted as a hub tour from Mobile Alabama and will feature spectacular Gulf Coast scenery, county back roads, local attractions, and great seafood.

A great 3-day lineup of touring is planned this year. Thursday morning we're off to Dauphin Island, then on a driving tour of the shrimp boat manufacturing plants, and ending up at the famous Light House Restaurant for lunch. In the afternoon we will tour the Bellingrath Gardens and Home. Friday morning we saddle up and head out to the Jim Henderson Antique Automobile Museum. This private collection contains many automotive artifact and over 60 antique vehicles. There are some real gems in the museum including a 1940 Packard Limo used to transport Bogart, an aluminum 1929 Lincoln, Liberace's Rolls Royce and a host of others, then on to the Christmas Town & Village. Lunch will feature good "ole" Southern cooking at Hart's Fried Chicken Restaurant. After lunch we will motor to the Brookley Aeroplex for a tour the Continental Motor Company aircraft engine manufacturing plant. The day will end with a lot of tire kicking and a Bar-B-Q cook-out. Saturday we're off to downtown Mobile for a visit to the Mardi Gras Museum. For lunch we will divide up into 2 groups, due to our size and limited restaurant parking, and dine at Ed' Seafood Shed and Felix's Fish Camp Grill which are side by side and offer a Spectacular view of the bay. Both restaurants are located approximately 1 mile from the Battleship Park. After lunch we will visit the USS Alabama Battleship Memorial Park, with its 175 acres of history and seven decades of heroism from WW II to Iraqi Freedom. The 7th Annual Sweet Home Alabama Tour will end in the evening with a banquet featuring a "Sea Food Feast". Sunday morning we're off for home and the end of another adventure on the Model "A" highway.

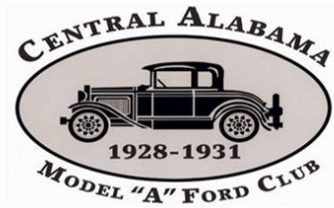
The Holiday Inn (Tillman's corner) Telephone: (251) 666-5600, address 4565 Highway 90 West, Mobile will be our host motel. The special tour rate for the rooms will be \$85.00 per night that includes up to 2 breakfasts. Cutoff date for the tour rate is September 16, 2013. When making reservations tell them you are with the Sweet Home Alabama Tour to get this special rate. Tow vehicle parking will be available in the rear parking lot of the Holiday Inn. 2013 Sweet Home Alabama Tour Registration form is below.

If you have any questions, please contact Ray Harper, at (251) 402-1427, email: nipper486@gmail.com or the Central Alabama Model "A" Ford Club Activities Coordinator: Paul Majerick at (334) 312-3029 email: paulmajerick@aol.com.

Bring "Henry's Finest" and get ready to do a lot of tire kicking, touring along the Gulf Coast, and just have a good old time on the "Model A Highway".



7th ANNUAL SWEET HOME ALABAMA TOUR REGISTRATION FORM



Name:		Name of Guest(s):		
Street Address:		City:	Apt./Suite:	
Zip Code:	Phone Number:	Email:		
Cell Number:		Car Club:		
<u>Year of Car:</u>	<u>Model of Car:</u>	<u>License No.:</u>	<u>Trailing:</u> Y / N (Circle One)	<u>Arrival:</u> Wed/Thurs / Fri
<u>Auto Insurance Company:</u>		<u>Auto Insurance Policy Number:</u>		
Event Registration		Qty.:	@	Amount
Tour Registration Fee		1	@	\$25.00
Thursday – Bellingrath Gardens admission				\$
1. Gardens and House			@	\$17.00 each
2. Garden only			@	\$10.50 each
Thursday – Bar-B-Q Cookout			@	\$15.00 each
Saturday - Mardi Gras Museum			@	\$5.00 each
Saturday – USS Alabama Battleship Park admission			@	\$ 13.00 each
Active/Retired Military (Present Military ID Card)			@	Free
NOTE: Each car will have to pay a \$2 parking fee at the gate				
Saturday - Tour Banquet featuring a "Sea Food Feast"			@	\$25.00 each
TOTAL AMOUNT ENCLOSED:				\$

Make your reservations directly with the Holiday Inn, 5465 Hwy 90 W. Mobile (251) 666-5600 or 544-5547, holiday-inn.com. Tell them you are attending the Sweet Home Alabama Tour to receive the special tour rate of \$85 per day that includes up to 2 breakfasts each day. Cut-off date for special tour rate is September 16, 2013.

The signers below, agree to indemnify and hold harmless for any and all liability due to my attendance and participation in the 2013 Sweet Home Alabama Tour, the Central Alabama Model "A" Ford Club (CAMAFC), CAMAFC Members, their officers, directors, staff and any and all constituents acting on behalf of the aforementioned affiliations and/or Tour Volunteers. Submission of this Tour Registration Form (signed or unsigned) constitutes acceptance of the terms of this release. The vehicle being used has all required automobile insurance established by state statute.

Please Make Checks Payable to the 'Central Alabama Model "A" Ford Club'

Mail Completed Registration Form to: Sweet Home Alabama Tour, 1309 Magnolia Curve, Montgomery, Alabama 36106-2010

Refunds will be considered on a case by case basis.

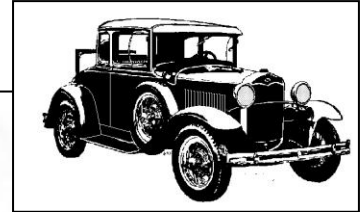
Signed _____

Dated _____

Bits and Pieces

MODEL A FORD PARTS SWAP MEET - Saturday, August 10th, 8 AM to 3 PM. At Cofer's *Stable of Thoroughbreds*, 3702 Lawrenceville Hwy., Tucker. Sponsored by Georgia Chapter of MAFCA. Free admission. **For Vendors:** Contact Rob Powell at 770-925-8076 for information. Spaces only \$20! Applications are due by July 31st.

7th Annual All Model A and Model T Swap Meet - Sept. 27 & 28, in West Columbia, SC, and sponsored by the Palmetto A's. This will take place at Smith and Jones Antique Auto Parts, one of our newsletter advertisers, located at 60 Wisconsin St. Vendor space is available, \$15 one day, \$25 for two days. Food concessions, \$2 door prizes, and more. For more information, and vendor registration, contact

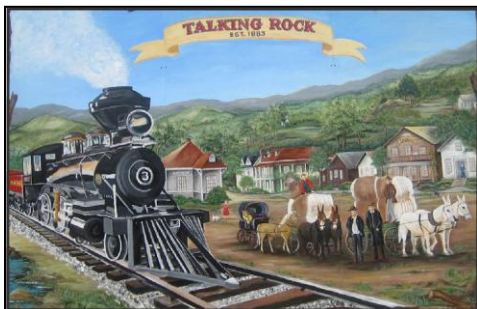


9th Annual Cruisin' to the Oldies Car Show - Senoia - Saturday, September 28th, Noon to 3 PM. Registration begins at 8:00, and you want to be prompt. \$20 Registration fee. Awards will be handed out. There will be food, fun, ice cream, shopping...an afternoon to enjoy; a popular, well-attended event.

Note: If you are unable to attend the Sweet Home Alabama Tour, here are a couple of fun options:



FALL FESTIVAL - Saturday, October 19 - Please bring your Model A's for display at the First Baptist Church of Sunnyside--5024 Church Rd, Sunnyside, Georgia. (Off Hwy. 19 & 41- between Jonesboro and Griffin.) From 11 AM to 3 PM. **Contact Joel Stewart--770-227-7164.**



HERITAGE DAYS FESTIVAL, October 19 - John Martin of the Gold Mine Region is again inviting, on behalf of the Mayor of Talking Rock, GA, to bring your Model A to Heritage Days. There will be craft booths, food, and music. Line-up is at 10 AM. At 2 PM the group will head to John's place for friendly visiting and desert in the fine mountain air. Contact John at: 706-692-7626, or email: poppysuse@windstream.net

Items For Sale

FOR SALE: 1931 Chevrolet Independence Roadster, off frame restoration finished in 2012. All new parts including wood kit, engine rebuilt by Robert Carden with less than 400 miles, new upholstery. Have \$26,000 invested, will take **\$18000 OBO or partial trade and money.**



Contact Jimmy Parks @ 229-853-2462 or email aznvetts@gmail.com.

FOR SALE: 1930 Tudor Sedan. Excellent driver. Older restoration; runs very well. Flathead Ted brakes. 12-volt system. Stock engine, trans, and rear- end blinkers. **Asking \$9,000.00**

Contact: Fred Huey 770-463-1951



FOR SALE: 1930 Town Sedan Fordor. Very nice car; paint and body is excellent; black on black with red wheels and pinstripe; excellent grey interior with fold down armrest in rear. Equipped with cowl lights, motormeter, Sparton horn, running board step plates, rear mounted spare and full rear bumper.



Asking \$15,500.00. Contact: Gerald Grizzard, 256-310-6463, Gfireman52@aol.com

FOR SALE:

1931 Right Front Fender with Wheel Well: \$190.00
1930 Left Front Fender with Wheel Well: \$225.00
Tom Romine, 770-527-4039

ModelATom@comcast.net

FOR SALE: 1931 Slant Window Town Sedan. Good driver; original car made in Canada.

Asking \$16,500.00. Contact: Gerald Grizzard, 256-310-6463, Gfireman52@aol.com

FOR SALE: (PRICE REDUCED) Rare 1931, black and burgundy Ford Model A Victoria. Much loved, fun touring car. Runs great, has new battery; is in mint condition. Flower vases, pull shades, cut-off switch, turn signals, Good upholstery, leather trunk. **Asking \$22,000.**



Wayne Haisten

haistenrw@aol.com 678-513-0668

FOR SALE: 1931 Tudor Sedan, indented firewall, two tone green with green wheels. Has rear mounted spare tire, luggage rack, Sparton horn, running board step plates, green Mohair interior.

This would make a very good first car, the paint is just so-so (10-20 footer), body is good except one spot above rear window. Cranks and runs well.

Asking \$8,950.00. Contact: Gerald Grizzard, 256-310-6463, Gfireman52@aol.com



FOR SALE: 1929 Model A Ford Woody Depot Hack; has been converted to 12-volts; has sealed beam headlights. Body was built in Cuba, MS, and has the looks of a station wagon. Body is in good condition but could use a new sealing. Truck was cranking and running well when stored. Could use a little TLC.

Asking \$9250.00 Contact: Gerald Grizzard, 256-310-6463, Gfireman52@aol.com



FOR SALE: 1930 Georgia License Plates. Unrestored and Restored. Singles, pairs, and sequentially numbered plates available. Email Jim Hunter at ytguy@aol.com or call (770) 487-0140



FOR SALE:

Sun Pro mechanical water temp gauge, used, in good cond. -- \$10.00.
Sun Pro Mech oil pressure gauge - 0 - 100 psi. -- good cond -- \$5.00.
Side of motor, restored water neck - excellent condition -- \$20.00.
Stock length pitman arm with new ball installed -- \$20.00.
Aluminum top water neck in good cond. -- \$10.00.
Steel top water neck with repaired crack -- \$5.00.
Call Phil Meyers for any of the above:
770-487-4220.

WANTED: 1931 Left front fender.

Contact Cecil Freeman,
256-225-3250 CFREEMAN43@AOL.COM

WANTED: 1930-31 Roadster Driver side door.

Contact Sean Hobbs, 678-877-5152

Club Items

Name Tags are available by contacting Teri Besch at 770-487-9215 or besch105@comcast.net

Shirts and Hats

We have Vendors that supply embroidery for hats and shirts. If you are interested contact Eugene Willingham @ 770-253-6518 or ewill@numail.org

NOTE: The vendor who provides embroidery for club items has had a rate increase of \$1 per item, which the board has chosen to pass on to members. The cost is now \$9, still a reasonable amount. And \$1.50 goes into the club treasury.

Remember: There is almost no limit to what you can have embroidered. Use your imagination, talk to Eugene and see what you can come up

Club Banners: We have designed a Club Banner to display on your car when touring or just to hang in your shop. Call Jim Johnston @ (678) 423-4344 or john8191@bellsouth.net

“ONE MILE AHEAD”
Smith and Jones
Antique Auto Parts
60 Wisconsin St., W. Columbia, SC 29170
803/822-4141 FAX 803/822-8477

Quality Parts
Same Day Shipping
Established 1972
156 Page Catalog
Order Desk 800-422-1928

www.snjparts.com



Carden Machine
ANTIQUE ENGINE REBUILDING

Robert Carden
Owner
770.251.9174
Cell: 678.613.0516
Email: rwcarden@bellsouth.net
Shipping Address:
170 Smith Rd • Newnan, GA 30263

We Only Use New Bobbit!

Specializing in Model T and Model A Fords
CYLINDER BORING • SLEEVING • ALIGN BORING • BALANCING • BABBITING

Invitation to join Model "A" Restorers Club

Membership in MARC is a wonderful investment in the Model A hobby. A good resource, it includes the bi-monthly magazine, "Model A News," which is filled with informative articles, notices of upcoming national events, and news of local regions. Membership in Southside A's requires membership in MARC, as well.

MODEL "A" RESTORERS CLUB		
6721 Merriman, Garden City, Michigan 48135 USA		
Membership Dues: Regular Mail: U.S. \$38; Air Mail: U.S. and Canada \$50, International Air Mail \$56 for the calendar year. Includes six issues of the Model "A" News. U.S. Funds Only		
APPLICATION FOR NEW MEMBERSHIP		
Name (Print) _____		
Spouse's Name _____		
Address _____		
City _____	State _____	ZIP _____
Phone Number _____		
<i>Is it ok to list phone number in club roster (yes or no)?</i> _____		
EMAIL address _____		
<i>Is it ok to list email address in club roster (yes or no)?</i> _____		
Check, Visa, Master Card, Discover Card (Circle one)		
Card Number _____		
Expiration Date _____ CVV code (last 3 #s on back of credit card) _____		
Daytime Phone # _____		
CHANGE OF ADDRESS NOTICE		
Name (Print) _____		
New Address _____		
City _____	State _____	Zip _____
Old Address _____		
City _____	State _____	Zip _____
Effective Date _____		

Model A Restorers Club Purpose:

The purpose of the Model "A" Restorer's Club is to encourage its members to acquire, preserve, restore, exhibit, and make use of the Model "A" Ford vehicles (models 1928-1931) and all things pertaining to the historical information, and to promote the introduction of ideas and fellowship among its members.

The Southside A's Newsletter:

The **Southside A's Newsletter** is published monthly by the Southside A's Model A organization, members of the Model "A" Restorers Club, and is distributed by the club's members and selected others. Non-copyrighted materials contained herein may be reprinted if credited to The Southside A's Newsletter. Reprints of copyrighted articles must have the approval of the original author. Views expressed herein do not necessarily reflect the views of the Southside A's Board of Directors or the National Model "A" Restorers Club.